

**PIP** | REFLECTIVE  
apparel

SAFETY CATALOG  
**2025**

---





# OUR PURPOSE >

**OUR PURPOSE IS GUIDED BY A COMMITMENT TO SAFETY, ENVIRONMENTAL RESPONSIBILITY AND INNOVATION.**

## **CAPABILITIES & SERVICE HIGHLIGHTS**

- Drop ship with no fees
- Logo personalization/reflective options
- Inventory commitment
- In-Stock Sizes (XS through 8XL, plus Talls)
- Unique products (3-in-1 Systems Gear, Two-Tone Color Block Options, Clear Credential Pockets)
- One piece minimums
- Speedy turnaround of blanks or personalized gear
- Compliance & safety expertise
- Design services

## **MARKET FOCUSED**

- Sanitation (Government, Private)
- Railroads
- Transportation
- Construction (Pipeline, Heavy, Road, General)
- Government (DOT, County Public Works, Municipal Public Works)
- Public Safety (Law Enforcement, Fire, EMS)
- Aviation (Airlines, Cargo)
- Forestry
- Mining
- Food & Beverage
- Pulp & Paper
- Telecom
- Energy/Utility
- Landscaping
- Manufacturing

# CONTENTS >

MADE TO ORDER ..... **PAGE 06**

OUTERWEAR ..... **PAGE 08**

3-IN-1 SYSTEMS GEAR ..... **PAGE 18**

RAINGEAR ..... **PAGE 22**

FLEECE HOODIES & PULLOVERS .... **PAGE 24**

PANTS ..... **PAGE 30**

ECOCHILL ..... **PAGE 32**

SHIRTS ..... **PAGE 34**

FLAME-RESISTANT FR ..... **PAGE 48**

VESTS ..... **PAGE 50**

BRAND YOUR GEAR ..... **PAGE 64**

HATS & ACCESSORIES ..... **PAGE 66**



# MADE TO ORDER

## CUSTOM UNIFORMS FOR EVERY WALK OF LIFE

Our team of apparel professionals provides turnkey made-to-order solutions for all your corporate apparel needs.

Whatever the color, whatever the style.

## MARKETS

- Restaurants
- Hospitality
- Corporate Events
- Casinos
- Food Processing
- Healthcare
- Pharmaceutical
- Manufacturing
- Automotive
- Logistics
- Telecom
- Warehousing
- Grocery
- College/Universities
- Safety
- Fire-Resistant
- Transportation
- DOT
- Railroad
- Airlines
- Trucking



CALL YOUR SALES EXECUTIVE FOR MORE INFORMATION ON MINIMUM ORDER QUANTITIES AND LEAD TIMES.

# ▶ OUTERWEAR



## 411-ST-LB

HI-VIS BOMBER // BREATHABLE // HOODED // WATERPROOF



AVAILABLE SIZES // SM - 6X

**FEATURES INCLUDE**

- 2-Tone Woven Polyester
- Internal Zip Cell Phone Pocket
- Detachable Insulated Hood with Drawstrings
- 2" Retroreflective Tape with 360° Reflective Coverage
- 330g Fleece Lining
- Zippered Front Closure
- Snap Storm Flap
- 2 Storm Flap Pockets
- Zip Through Collar
- Mic Tab



## 412-ST-LB

HI-VIS BOMBER // BREATHABLE // WATERPROOF // ZIP-OUT LINER



AVAILABLE SIZES // SM - 6X // WHILE SUPPLIES LAST

**FEATURES INCLUDE**

- 2-Tone Woven Polyester
- Internal Zip Cell Phone Chest Pocket
- Detachable Insulated Hood with Drawstrings
- 2" Retroreflective Tape with 360° Reflective Coverage
- Zippered Front Closure
- Snap Storm Flap
- Zip Through Collar
- Mic Tab
- 2 Slash Pockets
- Fleece Lining w/ 3 Pockets
- Cell Phone and 2 Chest Pockets
- Replacement: 414-ST-LB & 414-ST-OB



## 412-ST-OB

HI-VIS BOMBER // BREATHABLE // WATERPROOF // ZIP-OUT LINER



AVAILABLE SIZES // SM - 6X // WHILE SUPPLIES LAST

**FEATURES INCLUDE**

- 2-Tone Woven Polyester
- Internal Zip Cell Phone Chest Pocket
- Detachable Insulated Hood with Drawstrings
- 2" Retroreflective Tape with 360° Reflective Coverage
- Zippered Front Closure
- Snap Storm Flap
- Zip Through Collar
- Mic Tab
- 2 Slash Pockets
- Fleece Lining w/ 3 Pockets
- Cell Phone and 2 Chest Pockets
- Replacement: 414-ST-LB & 414-ST-OB



## 407-GT-LB

HI-VIS WINDBREAKER // HOODED // WATER RESISTANT



AVAILABLE SIZES // SM - 6X

**FEATURES INCLUDE**

- 100% Polyester Soft Shell
- 100% Nylon Black Accents
- 2 Zip Closure Pockets
- Water Resistant Outer Shell
- Lined Windbreaker with Adjustable Attached Hood
- 2 Slash Pockets, Zippered Chest Pocket
- 2" Retroreflective Tape with 360° Reflective Coverage



## ▶ OUTERWEAR

**413-GT-LB****HI-VIS BOMBER // HOODED // WATERPROOF****AVAILABLE SIZES // SM - 7X // LGT-7XT****FEATURES INCLUDE**

- 2-Tone Woven Polyester
- Zippered Cell Phone Chest Pocket
- Detachable Snap Off Hood with Drawstrings
- 2" Retroreflective Tape with 360° Reflective Coverage
- Stand Up Funnel Collar
- Quilted Permanent Liner
- Zip Front Closure
- Heavy Duty Mic Tab
- 2 Front Zipper Closure Waist Pockets
- 2 Internal Front Pockets
- Hook & Loop Adjustable Cuffs



BREATHABLE

HOODED

WATERPROOF

EXTRA TALL

**414-ST-LB****HI-VIS BOMBER // HOODED // WATERPROOF****AVAILABLE SIZES // SM - 2X // 3X-6X****FEATURES INCLUDE**

- 2-Tone Woven Polyester
- Zippered Cell Phone Chest Pocket
- Detachable Snap Off Hood
- 2" Retroreflective Tape with 360° Reflective Coverage
- Zip Out 620NTBK Fleece Liner
- Heavy Duty Mic Tab
- 2 Front Slash Pockets
- Internal Zip Cell Phone Chest Pocket
- All Systems Gear liners zip into the 414 Bomber Jacket



BREATHABLE

HOODED

SYSTEMS GEAR

WATERPROOF

**414-ST-OB****HI-VIS BOMBER // HOODED // WATERPROOF****AVAILABLE SIZES // SM - 2X // 3X-6X****FEATURES INCLUDE**

- 2-Tone Woven Polyester
- Zippered Cell Phone Chest Pocket
- Detachable Snap Off Hood
- 2" Retroreflective Tape with 360° Reflective Coverage
- Zip Out 620NTBK Fleece Liner
- Heavy Duty Mic Tab
- 2 Front Slash Pockets
- Internal Zip Cell Phone Chest Pocket
- All Systems Gear liners zip into the 414 Bomber Jacket



BREATHABLE

HOODED

SYSTEMS GEAR

WATERPROOF

**421-ST-LM****HI-VIS 3-SEASON JACKET // WATER RESISTANT****AVAILABLE SIZES // SM - 7X****FEATURES INCLUDE**

- 2 Front Zip Slash Pockets
- Shoulder Cell Phone Pocket
- Inner Right Chest Pocket
- 330g Fleece Liner
- 2" Retroreflective Tape with 360° Reflective Coverage
- 3-Season Jacket
- Woven Polyester
- Zippered Front Closure
- Zip Through Collar
- Mic Tab
- Systems Gear - Zips into all 431 Parkas and 414 Bomber Jackets



ANSI

CLASS 3

SYSTEMS GEAR

**421-ST-OR****HI-VIS 3-SEASON JACKET // WATER RESISTANT****AVAILABLE SIZES // SM - 6X****FEATURES INCLUDE**

- 2 Front Zip Slash Pockets
- Shoulder Cell Phone Pocket
- Inner Right Chest Pocket
- 330g Fleece Liner
- 2" Silver Reflective Segmented Tape
- 3-Season Jacket
- Woven Polyester
- Zippered Front Closure
- Zip Through Collar
- Mic Tab
- Zips into all 431 Parkas and the 414 Bomber Jacket
- Systems Gear - Zips into all 431 Parkas and 414 Bomber Jackets



ANSI

CLASS 3

SYSTEMS GEAR

**422-CT-LB****HI-VIS JACKET // BREATHABLE // HOODED // WATERPROOF****AVAILABLE SIZES // SM - 2X // 3X-6X****FEATURES INCLUDE**

- 2-Tone Woven Polyester
- 2" Segmented Tape
- Mechanical Stretch with 3 Layers of 100% Polyester Backing
- Waterproof and Windproof



ANSI

CLASS 3

BREATHABLE

HOODED

WATERPROOF

## ▶ OUTERWEAR

**431-ST-BK****PARKA // BREATHABLE // HOODED // WATERPROOF****AVAILABLE SIZES // SM - 6X****FEATURES INCLUDE**

- Woven Polyester
- Chest Cell Phone Pocket
- Detachable In-Collar Hood with Drawstrings
- Internal Zipper System for Inner Jackets (Systems Gear)
- 2" Retroreflective Tape with 360° Reflective Coverage
- Mesh Lining
- Zip Front Closure
- Snap Storm Flap
- 2 Storm Flap Pockets
- Mic Tab

**431-ST-OR****HI-VIS PARKA // BREATHABLE // HOODED // WATERPROOF****AVAILABLE SIZES // SM - 6X****FEATURES INCLUDE**

- Woven Polyester
- Chest Cell Phone Pocket
- Detachable In-Collar Hood with Drawstrings
- Internal Zipper System for Inner Jackets (Systems Gear)
- 2" Retroreflective Tape with 360° Reflective Coverage
- Mesh Lining
- Zip Front Closure
- Snap Storm Flap
- 2 Storm Flap Pockets
- Mic Tab

**431-ST-LB****HI-VIS PARKA // BREATHABLE // HOODED // WATERPROOF****AVAILABLE SIZES // XS - 7X****FEATURES INCLUDE**

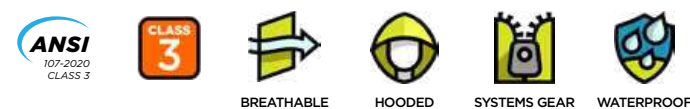
- 2-Tone Woven Polyester
- Chest Cell Phone Pocket
- Detachable In-Collar Hood with Drawstrings
- Internal Zipper System for Inner Jackets (Systems Gear)
- 2" Retroreflective Tape with 360° Reflective Coverage
- Mesh Lining
- Zip Front Closure
- Snap Storm Flap
- 2 Storm Flap Pockets
- Mic Tab

**431-CS-LB****HI-VIS 3-SEASON PARKA // BREATHABLE // HOODED // WATERPROOF****AVAILABLE SIZES // SM - 6X****FEATURES INCLUDE**

- 2-Tone Woven Polyester
- Chest Cell Phone Pocket
- Detachable In-Collar Hood with Drawstrings
- Internal Zipper System for Inner Jackets (Systems Gear)
- 2" Contrasting Retroreflective Tape with 360° Reflective Coverage
- Mesh Lining
- Zip Front Closure
- Snap Storm Flap
- 2 Storm Flap Pockets
- Mic Tab

**431-ST-OB****HI-VIS PARKA // BREATHABLE // HOODED // WATERPROOF****AVAILABLE SIZES // SM - 6X****FEATURES INCLUDE**

- 2-Tone Woven Polyester
- Chest Cell Phone Pocket
- Detachable In-Collar Hood with Drawstrings
- Internal Zipper System for Inner Jackets (Systems Gear)
- 2" Retroreflective Tape with 360° Reflective Coverage
- Mesh Lining
- Zip Front Closure
- Snap Storm Flap
- 2 Storm Flap Pockets
- Mic Tab

**431-CX-LB****HI-VIS 3-SEASON PARKA // BREATHABLE // HOODED // WATERPROOF****AVAILABLE SIZES // XS - 6X****FEATURES INCLUDE**

- Woven Polyester
- Chest Cell Phone Pocket
- Detachable In-Collar Hood with Drawstrings
- Internal Zipper System for Inner Jackets (Systems Gear)
- 2" Contrasting Retroreflective Tape with 360° Reflective Coverage
- Mesh Lining
- Zip Front Closure
- Snap Storm Flap
- 2 Storm Flap Pockets
- Mic Tab



▶ OUTERWEAR

**432-CT-LB**

HI-VIS // BREATHABLE // HOODED // WATERPROOF



AVAILABLE SIZES // SM - 2X // 3X-6X

FEATURES INCLUDE

- 2-Tone 3N1 Waterproof, Windproof Jacket
- 3 Layers of 100% Polyester Ripstop + PU Film + Polyester Backing
- Lightweight & Warm
- 2" Silver Reflective Segmented Tape



Sold As A Set

**432-CT-OB**

HI-VIS // BREATHABLE // HOODED // WATERPROOF



AVAILABLE SIZES // SM - 2X // 3X-6X

FEATURES INCLUDE

- 2-Tone 3N1 Waterproof, Windproof Jacket
- 3 Layers of 100% Polyester Ripstop + PU Film + Polyester Backing
- Lightweight & Warm
- 2" Silver Reflective Segmented Tape



Sold As A Set

# NEW PRODUCT

## RUGGED + INSULATED RA ProDuck™ BOMBER JACKET WITH BREAKAWAY SNAP OFF HOOD



Infused with heritage, mirroring the enduring reputation of the beloved brown duck fabric cherished by workers everywhere.



CANVAS WEAVE + SEGMENTED TAPE

### ELEMENT RESISTANT THERMAL TECH

- ▶ Water resistant fabric with DWR acrylic coating
- ▶ Inside right chest zippered cell phone pocket
- ▶ Rugged jacket body has Thermal Tech layer plus 200gsm, 100% polyester and 160gsm for sleeves
- ▶ Two exterior slash pockets are lined with brushed polyester tricot for warmth
- ▶ Protection against temperatures as low as -22°F

### EXTRA STRENGTH

- ▶ Triple needle stitching for strength
- ▶ Heavy-duty center pull #10 brass zipper
- ▶ Can withstand 100 home wash cycles

**430-PS-LB** S-5X; LT-3XLT

LIME + BLACK

ANSI CLASS 3

MATERIAL:

- Heavy duty insulated 9 oz. Duck bomber jacket
- Outer Shell is 80% polyester/ 20% cotton woven Duck fabric
- Body lining with polyester pongee and sleeves with 210t polyester taffeta
- Segmented tape
- Triple needle stitching for strength

FEATURES:

- ANSI Class 3 Type R
- Rib knit cuffs and waist
- Hood - removable snap off
- Right shoulder mic tab

**430-PS-OB** S-5X; LT-3XLT

ORANGE + BLACK

ANSI CLASS 3

MATERIAL:

- Heavy duty insulated 9 oz. Duck bomber jacket
- Outer Shell is 80% polyester/ 20% cotton woven Duck fabric
- Body lining with polyester pongee and sleeves with 210t polyester taffeta
- Segmented tape
- Triple needle stitching for strength

FEATURES:

- ANSI Class 3 Type R
- Rib knit cuffs and waist
- Hood - removable snap off
- Right shoulder mic tab

\*AVAILABLE  
FALL 2024



▶ OUTERWEAR

**433-ST-LB**

HI-VIS PARKA // BREATHABLE // HOODED // WATERPROOF



AVAILABLE SIZES // SM - 6X

FEATURES INCLUDE

- Two-Tone Woven Polyester
- 2 Storm Flap Pockets
- Chest Cell Phone Pocket
- Lined with 250g 3M™ Thinsulate™ Insulation
- Detachable 3M™ Thinsulate™ Insulated Drawstring Hood
- 2" Retroreflective Tape with 360° Reflective Coverage
- Zip Front Closure
- Snap Storm Flap
- Mic Tab



BREATHABLE HOODED WATERPROOF

**461-ST-LR**

HI-VIS PARKA // HOODED // WATERPROOF



AVAILABLE SIZES // SM - 5X

FEATURES INCLUDE

- Reinforced Cordura Abrasion Resistant Material
- 2" Retroreflective Tape with 360° Reflective Coverage
- Optional Zip In Liners & Zip In Hoods
- Zip Closure with Snap Storm Flap
- Dual Shoulder Mic Tabs
- Top Zip Left Chest Cell Phone Pocket
- YKK Zippers
- ID Panel
- Hook & Loop Closure Inner Left Waist Mesh Pocket
- 2 Hook & Loop Closure Waist Pockets
- 2 Side & 2 Chest Zip Closure Pockets
- Hook & Loop Neroperene Storm Cuffs
- Bloodborne Pathogen Resistant Meets ASTM F1670/F1671
- Liner: 625-NT-BK



BREATHABLE SYSTEMS GEAR WATERPROOF

**451-ST-LB**

HI-VIS JACKET // BREATHABLE



AVAILABLE SIZES // SM - 5X

FEATURES INCLUDE

- 100% Polyester Soft Shell
- 2 Zip Closure Pockets
- Zippered Chest Cell Phone Pocket
- Athletic Cut
- Brushed Fleece Lining
- Zippered Front Closure
- 2" Retroreflective Tape with 360° Reflective Coverage



BREATHABLE

**620-NT-BK**

FLEECE JACKET // LINER FOR 431 PARKA



AVAILABLE SIZES // SM - 6X

FEATURES INCLUDE

- 100% Polyester
- Zip Front Closure
- Elastic Waist and Cuffs
- Systems Gear - Zips into all 431 Parkas and 414 Bomber Jackets



SYSTEMS GEAR

**451-CT-BK**

JACKET // BREATHABLE



AVAILABLE SIZES // SM - 5X

FEATURES INCLUDE

- 100% Polyester Soft Shell
- 2 Zip Closure Pockets
- Water Resistant Outer Shell
- 2" Retroreflective Tape with 360° Reflective Coverage
- Athletic Cut
- Brushed Fleece Lining
- Zippered Front Closure
- Tunnel Collar



BREATHABLE

**625-NT-BK**

SOFT SHELL LINER // BREATHABLE // WATERPROOF



AVAILABLE SIZES // SM - 5X

FEATURES INCLUDE

- 100% Polyester Soft Shell
- Zip Front Closure
- Side Vent Equipment Access Zippers
- Elastic Hook & Loop Closure Adjustable Cuffs
- Adjustable Toggles at Waistline
- Zips into the 461STLR First Responder Parka



BREATHABLE



SYSTEMS GEAR



WATERPROOF

# SYSTEMS GEAR

Layerable Outerwear



COMPLETE  
**3**IN**1**  
LAYERED SYSTEMS GEAR



## Customize Your Comfort

Systems Gear by Reflective Apparel, the revolutionary 3-in-1 waterproof winter parka and bomber jacket system designed for unmatched versatility, durability, and functionality.

### 1. PICK YOUR WATER RESISTANT LINER



### 2. ZIPS AND SNAPS INTO YOUR WATERPROOF PARKA



» **OVER 50 COMBINATIONS  
TO LAYER FOR WARMTH** «

MAKING  
PEOPLE  
**VISIBLE**  
MEANS  
MAKING  
PEOPLE  
SAFE.



## WATERPROOF PARKAS



### 431CSLB

ANSI Class 3 300D Poly Oxford Waterproof & Breathable Parka with Detachable Hood and Contrasting Trim

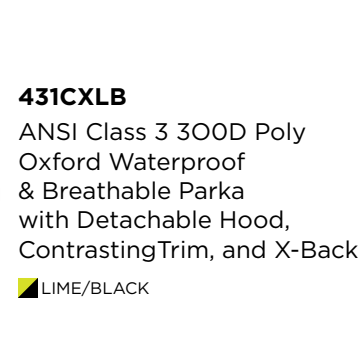
■ LIME/BLACK



### 461STLR

ANSI Class 2 Waterproof Jacket Poly 300D Oxford with PTFE Film Knitted Coated Lining Abrasion Resistant Shoulders & Elbows

■ LIME/BLACK



### 431CXLB

ANSI Class 3 300D Poly Oxford Waterproof & Breathable Parka with Detachable Hood, Contrasting Trim, and X-Back

■ LIME/BLACK

## PARKAS

### 431STBK, 431STOR, 431STOB, 431STLB

ANSI Class 3 300D Poly Oxford Waterproof & Breathable Parka with Detachable Hood

■ BLACK ■ LIME/BLACK  
■ ORANGE ■ ORANGE/BLACK

## WATERPROOF BOMBERS



## BOMBERS

### 414STLB, 414STOB

ANSI Class 3 Waterproof & Breathable High Visibility Bomber Jacket with Detachable Hood and Zip Out Line

■ LIME/BLACK ■ ORANGE/BLACK

*The 414 bomber jacket comes with the 620NTBK 9 oz fleece liner already installed. For future customization, it is fully compatible with all Systems Gear liners, allowing them to zip in and out with ease.*

## JACKETS/HOODIES



## ZIP IN LINERS

### 421STLM, 421STOR

ANSI Class 3 Poly Pongee Water Resistant 3-Season Jacket Polar Fleece Liner

■ LIME ■ ORANGE



### 602STLB, 602STOR

ANSI Class 3 10.5oz Microfiber Fleece Sweatshirt Full Zip Detachable Hood

■ LIME/BLACK ■ ORANGE



### 602CXLB

Contrasting Trim with X-Back

■ LIME/BLACK



### 603STLB

ANSI Class 3 16oz Thermal Lined Fleece Hoodie Full Zip Insulated

■ LIME/BLACK



### 625NTBK

3 Layer Waterproof & Breathable Soft Shell Poly TPU Fused to Tricotin Trunk (400gsm) with Taffeta Lining in the Sleeves

■ BLACK



### 620NTBK

Non-ANSI 9oz Fleece Jacket 100% Polyester with Zip Closure

■ BLACK



Finish your 3-in-1 Systems Gear with matching waterproof bottoms

## BOTTOMS

### 700STBK, 700STOR, 700STLB

ANSI Class E Poly Oxford Waterproof & Breathable Pants Elastic Drawstring & Ankle Zipper Pass Through Pockets

■ BLACK ■ ORANGE ■ LIME/BLACK

# ▶ RAIN GEAR



## 402-ST-LM

HI-VIS RAINSUIT // HOODED // WATERPROOF

AVAILABLE SIZES // SM - 6X

### FEATURES INCLUDE

- Woven Polyester
- Polyurethane Coated
- Hooded
- Cell Phone Pocket
- Drawstring Hood
- Pass-Through Pockets
- Ankle Snap Adjustment

- Pants Feature Elastic Waistband with Drawstring
- Hook & Loop Sleeves Adjustments for Comfort / Keep Wearer Dry
- 2" Retroreflective Tape with 360° Reflective Coverage



HOODED

WATERPROOF

## 403-ET-LB

HI-VIS JACKET // BREATHABLE // HOODED // WATERPROOF

AVAILABLE SIZES // SM - 6X

### FEATURES INCLUDE

- 100% Polyester in High Visibility Fluorescent Lime
- 100% Nylon in Black
- 2" Retroreflective Tape with 360° Reflective Coverage
- Lightweight

- Hi-Vis 100% Polyester Woven
- Metal Snap Closure
- Vented Back for Increased Breathability
- Adjustable Sculpted Hood with Extended Bill and Contoured Vented Side



BREATHABLE

HOODED

WATERPROOF

# ▶ SWEATSHIRTS

## 602-ST-LB

### HI-VIS FLEECE HOODIE // REMOVABLE HOOD



AVAILABLE SIZES // SM - 6X // LGT - 6XT

#### FEATURES INCLUDE

- 10.5oz Microfiber Fleece
- 100% Spun Polyester
- Zip Closure
- Detachable Drawstring Hood
- 2 Front Hand Warmer Pockets
- Elasticized Knit Waist and Cuffs
- 2" Retroreflective Tape with 360° Reflective Coverage
- YKK Zipper
- Systems Gear - Zips into all 431 Parkas and 414 Bomber Jackets



HOODED SYSTEMS GEAR EXTRA TALL

## 603-ST-LB

### HI-VIS FLEECE HOODIE // PERMANENT HOOD



AVAILABLE SIZES // SM - 6X

#### FEATURES INCLUDE

- 100% Spun Polyester Microfiber Fleece
- Thermal Lined Drawstring Hood
- 2 Front Hand Warmer Pockets
- Elasticized Knit Waist and Cuffs
- 16oz Microfiber Fleece
- 2" Retroreflective Tape with 360° Reflective Coverage
- Cotton Thermal Liner
- YKK Zipper
- Zips into all 431 Parkas and the 414 Bomber Jacket



HOODED SYSTEMS GEAR

## 602-ST-OR

### HI-VIS FLEECE HOODIE // REMOVABLE HOOD



AVAILABLE SIZES // SM - 6X

#### FEATURES INCLUDE

- 10.5oz Microfiber Fleece
- Zip Closure
- Detachable Drawstring Hood
- 2 Front Hand Warmer Pockets
- Elasticized Knit Waist and Cuffs
- 2" Retroreflective Tape with 360° Reflective Coverage
- Systems Gear - Zips into all 431 Parkas and 414 Bomber Jackets



HOODED SYSTEMS GEAR

## 604-CT-LB

### HI-VIS FLEECE PULLOVER // PERMANENT HOOD



AVAILABLE SIZES // SM - 2X // 3X-6X

#### FEATURES INCLUDE

- 8oz. Knitted Microfiber Fleece
- 100% Polyester
- Two-Tone High Visibility Fluorescent
- 2 Large Hand Warmer Pockets
- Lime & Black
- Permanent Hood with Adjustable Drawstring
- Rib Knitted Waist and Cuffs
- 2" Segmented Tape



HOODED

## 602-CX-LB

### HI-VIS FLEECE HOODIE // REMOVABLE HOOD



AVAILABLE SIZES // SM - 6X

#### FEATURES INCLUDE

- 10.5oz Microfiber Fleece
- Zip Closure
- Detachable Drawstring Hood
- 2 Front Hand Warmer Pockets
- Elasticized Knit Waist and Cuffs
- 2" Contrasting Retroreflective Tape with 360° Reflective Coverage
- Systems Gear - Zips into all 431 Parkas and 414 Bomber Jackets



HOODED SYSTEMS GEAR

## 604-CT-LN

### HI-VIS FLEECE PULLOVER // PERMANENT HOOD



AVAILABLE SIZES // SM - 2X // 3X-6X

#### FEATURES INCLUDE

- 8oz. Knitted Microfiber Fleece
- 100% Polyester
- Two-Tone High Visibility Fluorescent
- 2 Large Hand Warmer Pockets
- Lime & Navy
- Permanent Hood with Adjustable Drawstring
- Rib Knitted Waist and Cuffs
- 2" Segmented Tape



HOODED

# ▶ SWEATSHIRTS

## 604-GT-LN

### HI-VIS FLEECE PULLOVER // PERMANENT HOOD



AVAILABLE SIZES // SM - 6X

**FEATURES INCLUDE**

- 7oz. Knitted Microfiber Fleece
- 100% Polyester
- 2" Retroreflective Tape with 360° Reflective Coverage
- Two-Tone High Visibility Fluorescent
- Lime & Navy
- Permanent Hood with Adjustable Drawstring
- 2 Large Hand Warmer Pockets
- Knitted Waist and Cuffs



HOODED

## 605-CT-LB

### HI-VIS FLEECE PULLOVER // NO HOOD



AVAILABLE SIZES // SM - 2X // 3X-6X

**FEATURES INCLUDE**

- 8oz. Knitted Microfiber Fleece
- 100% Polyester
- Two-Tone High Visibility Fluorescent
- 2 Large Hand Warmer Pockets
- Quarter Zip Pullover With Collar
- Lime & Black
- YKK Zipper
- Rib Knitted Waist and Cuffs
- 2" Segmented Tape



## 605-CT-LN

### HI-VIS FLEECE PULLOVER // NO HOOD



AVAILABLE SIZES // SM - 2X // 3X-6X

**FEATURES INCLUDE**

- 8oz. Knitted Microfiber Fleece
- 100% Polyester
- Two-Tone High Visibility Fluorescent
- 2 Large Hand Warmer Pockets
- Quarter Zip Pullover With Collar
- Lime & Navy
- YKK Zipper
- Rib Knitted Waist and Cuffs
- 2" Segmented Tape



## 605-CT-OB

### HI-VIS FLEECE 1/4 ZIP PULLOVER // NO HOOD



AVAILABLE SIZES // SM - 2X // 3X-6X

**FEATURES INCLUDE**

- 8oz. Knitted Microfiber Fleece
- 100% Polyester
- Two-Tone High Visibility Fluorescent
- 2 Large Hand Warmer Pockets
- Quarter Zip Pullover With Collar
- Orange & Black
- YKK Zipper
- Rib Knitted Waist and Cuffs
- 2" Segmented Tape



## 605-GT-LN

### HI-VIS FLEECE 1/4 ZIP PULLOVER // NO HOOD



AVAILABLE SIZES // SM - 6X

**FEATURES INCLUDE**

- 8oz. Knitted Microfiber Fleece
- 100% Polyester
- 2" Retroreflective Tape with 360° Reflective Coverage
- Two-Tone High Visibility Fluorescent
- Lime & Navy
- Quarter Zip Closure
- 2 Large Hand Warmer Pockets
- Knitted Waist and Cuffs



## 610-CT-LB

### HI-VIS CREWNECK // NO HOOD



AVAILABLE SIZES // SM - 2X // 3X-6X

**FEATURES INCLUDE**

- 7.3oz. Knitted Pique Knitted Fleece
- 100% Polyester
- 2" Segmented Tape
- Two-Tone High Visibility Fluorescent
- Lime & Black
- Mechanical Stretch Crewneck Sweatshirt
- Excellent Anti-Pilling & Super Soft
- Rib Knitted Waist and Cuffs



# ▶ SWEATSHIRTS

**610-CX-OB**

**HI-VIS CREWNECK // NO HOOD**



**AVAILABLE SIZES // SM - 2X // 3X-6X**

**FEATURES INCLUDE**

- 7.3oz. Knitted Pique Knitted Fleece
- 100% Polyester
- 2" Segmented Tape
- Two-Tone High Visibility Fluorescent
- Orange & Black
- Crewneck Sweatshirt with X Back
- Excellent Anti-Pilling & Super Soft
- Rib Knitted Waist and Cuffs



▶ PANTS

**700-ST-BK**

REFLECTIVE PANTS // BREATHABLE // WATERPROOF



AVAILABLE SIZES // SM - 8X

FEATURES INCLUDE

- PU Coated 100% Polyester Shell
- Black Fabric Maintains a Professional Appearance Hiding Dirt and Stains
- Elastic Waist with Drawstring
- Snap Adjustable Ankle
- Pass-through Pockets
- 2" Retroreflective Tape with 360° Reflective Coverage
- Extra Long Ankle Zipper



**700-ST-LB**

HI-VIS PANTS // BREATHABLE // WATERPROOF



AVAILABLE SIZES // SM - 6X

FEATURES INCLUDE

- PU Coated 100% Polyester Shell
- Two-Tone High Visibility Fluorescent Lime & Black
- Elastic Waist with Drawstring
- Snap Adjustable Ankle
- Pass Through Pockets
- 2" Retroreflective Tape with 360° Reflective Coverage
- Extra Long Ankle Zipper



**700-ST-OR**

HI-VIS PANTS // BREATHABLE // WATERPROOF



AVAILABLE SIZES // SM - 6X

FEATURES INCLUDE

- PU Coated 100% Polyester Shell
- 300 Denier Oxford Woven Material
- Elastic Waist with Drawstring
- Snap Adjustable Ankle
- Pass-through Pockets
- 2" Retroreflective Tape with 360° Reflective Coverage
- Extra Long Ankle Zipper



**701-CS-LM**

HI-VIS PANTS



AVAILABLE SIZES // MD - 4X

FEATURES INCLUDE

- 2" Contrasting Retroreflective Tape with 360° Reflective Coverage
- 100% Polyester Mesh
- Two-Tone High Visibility Fluorescent Orange & Lime
- To Be Worn As An Overgarment. Not a Primary Garment.





# INTRODUCING ECO CHILL

COOL + COMFORTABLE

WITH COOLMAX® TECHNOLOGY

Powered by Reflective Apparel, EcoChill is an innovative line of hi-vis sustainable clothing that takes workwear to the next level.

Through the combination of recycling plastic into fabric and COOLMAX® technology, EcoChill keeps employees cool and visible, while also being eco-friendly.

EcoChill's specially engineered, unique four-channel polyester fiber design wicks moisture away from the skin and onto the fabric surface, where it evaporates faster than traditional moisture-wicking fabrics. This process helps to regulate body temperature.

Designed for year-round comfort, our EcoChill shirts make a great first layer for cold weather, pulling chill-inducing perspiration away from the body, and in warmer months, they keep employees cool and dry. No matter the season, EcoChill equates to wearer comfort.



104-CM-PS



204-CM-PS

#### AVAILABLE COLORS

LIME

ORANGE

#### SIZES

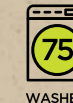
• S-5X; LT-3XLT

#### MATERIAL

• 50% COOLMAX®, 50% recycled polyester  
needle mesh  
• 4.1oz - 140gsm

#### FEATURES

- Vents for cooling at underarm and side panels
- 75 wash compliant
- Inherent wicking finish
- UPF 50+
- Segmented 2" Tape



▶ SHORT SLEEVE SHIRTS

**100-BNT-LM**

**HI-VIS SHORT SLEEVE SHIRT // MOISTURE-WICKING**



AVAILABLE SIZES // SM - 7X // LGT - 6XT

**FEATURES INCLUDE**

- 100% Polyester
- 4.1oz Birdseye Knit
- Lightweight & Soft Performance Fabric
- Moisture Management Wicking
- Minimizes Odor
- Left Chest Pocket
- Crew Neck T-Shirt
- Available In Tall (3 inches of extra length) (LIME ONLY)



**102-ST-LM**

**HI-VIS SHORT SLEEVE SHIRT // MOISTURE-WICKING**



AVAILABLE SIZES // SM - 7X, LT - 6T

**FEATURES INCLUDE**

- 2" Retroreflective Tape with 360° Reflective Coverage
- 4.1oz Birdseye Knit
- 100% Polyester
- Left Chest Pocket
- 50 Wash Compliant 2" Solid Tape
- Lightweight & Soft Performance Fabric
- Moisture Management Wicking
- Minimizes Odor
- Available In Tall (3 inches of extra length) (LIME ONLY)



**100-BNT-OR**

**HI-VIS SHORT SLEEVE SHIRT // MOISTURE-WICKING**



AVAILABLE SIZES // SM - 6X

**FEATURES INCLUDE**

- 100% Polyester
- 4.1oz Birdseye Knit
- Lightweight & Soft Performance Fabric
- Moisture Management Wicking
- Minimizes Odor
- Left Chest Pocket
- Crew Neck



**102-ST-OR**

**HI-VIS SHORT SLEEVE SHIRT // MOISTURE-WICKING**



AVAILABLE SIZES // SM - 7X, LT - 6T

**FEATURES INCLUDE**

- 2" Retroreflective Tape with 360° Reflective Coverage
- 4.1oz Birdseye Knit
- 100% Polyester
- Left Chest Pocket
- 50 Wash Compliant 2" Solid Tape
- Lightweight & Soft Performance Fabric
- Moisture Management Wicking
- Minimizes Odor
- Available In Tall (3 inches of extra length) (LIME ONLY)



**101-CT-LM**

**HI-VIS SHORT SLEEVE SHIRT // MOISTURE-WICKING**



AVAILABLE SIZES // SM - 6X

**FEATURES INCLUDE**

- Heavyweight 6oz Jersey
- 100% Polyester
- 75 Wash Compliant Segmented 2" Tape
- No Pocket
- HACCP Compliant
- 2" Retroreflective Tape with 360° Reflective Coverage
- Moisture Management Wicking



**102-ST-LB**

**HI-VIS SHORT SLEEVE SHIRT // MOISTURE-WICKING**



AVAILABLE SIZES // SM - 6X

**FEATURES INCLUDE**

- 2" Retroreflective Tape with 360° Reflective Coverage
- 100% Polyester
- 4.1oz Birdseye Knit
- 50 Wash Compliant 2" Solid Tape
- Left Chest Pocket
- Lightweight & Soft Performance Fabric
- Moisture Management Wicking
- Two-Tone High Visibility Fluorescent Lime & Black



▶ SHORT SLEEVE SHIRTS

**102-CT-LM**

HI-VIS SHORT SLEEVE SHIRT // MOISTURE-WICKING



AVAILABLE SIZES // SM - 7X // LGT - 6XT

FEATURES INCLUDE

- 100% Polyester
- 4.1oz Birdseye Knit
- Lightweight & Soft Performance Fabric
- 75 Wash Compliant Segmented 2" Tape
- Left Chest Pocket
- 2" Retroreflective Tape with 360° Reflective Coverage
- Moisture Management Wicking
- Minimizes Odor
- Available In Tall (3 inches of extra length)



**102-SX-LM**

HI-VIS SHORT SLEEVE SHIRT // MOISTURE-WICKING



AVAILABLE SIZES // SM - 6X

FEATURES INCLUDE

- 2" Retroreflective Tape with 360° Reflective Coverage
- 100% Polyester
- 4.1oz Birdseye Knit
- Ultra-Lightweight Fabric
- Reflective X-Back
- Moisture Management Wicking
- Minimizes Odor
- Softest & Lightest Micromesh on the Market
- Left Chest Pocket
- 50 Wash Compliant 2" Solid Tape



**102-CT-OR**

HI-VIS SHORT SLEEVE SHIRT // MOISTURE-WICKING



AVAILABLE SIZES // SM - 6X

FEATURES INCLUDE

- 100% Polyester
- Lightweight & Soft Performance Fabric
- 2" Retroreflective Tape with 360° Reflective Coverage
- 75 Wash Compliant Segmented 2" Tape
- Left Chest Pocket
- Moisture Management Wicking
- Minimizes Odor



**102-SX-OR**

HI-VIS SHORT SLEEVE SHIRT // MOISTURE-WICKING



AVAILABLE SIZES // SM - 5X

FEATURES INCLUDE

- 2" Retroreflective Tape with 360° Reflective Coverage
- 100% Polyester
- 4.1oz Birdseye Knit
- Ultra-Lightweight Fabric
- Reflective X-Back
- Moisture Management Wicking
- Minimizes Odor
- Softest & Lightest Micromesh on the Market
- 50 Wash Compliant 2" Solid Tape
- Left Chest Pocket



**102-CT-LB**

HI-VIS SHORT SLEEVE SHIRT // MOISTURE-WICKING



AVAILABLE SIZES // SM - 6X

FEATURES INCLUDE

- 2" Retroreflective Tape with 360° Reflective Coverage
- Lightweight & Soft Performance Fabric
- 100% Polyester
- Moisture Management Wicking
- Minimizes Odor
- 75 Wash Compliant Segmented 2" Tape
- Left Chest Pocket



**103-CT-LM**

HI-VIS SHORT SLEEVE SHIRT // MOISTURE-WICKING



AVAILABLE SIZES // SM - 7X

FEATURES INCLUDE

- 100% Polyester
- 2" Retroreflective Tape with 360° Reflective Coverage
- Ultra-Lightweight Fabric
- 75 Wash Compliant Segmented 2" Tape
- 3.7oz Micro Mesh
- Moisture Management Wicking
- Left Chest Pocket
- Minimizes Odor



▶ SHORT SLEEVE SHIRTS

**104-ST-LM**

HI-VIS SHORT SLEEVE SHIRT // MOISTURE-WICKING



AVAILABLE SIZES // SM - 6X // LGT - 6XT

FEATURES INCLUDE

- 100% Polyester
- 4.1oz Birdseye Knit
- 2" Retroreflective Tape with 360° Reflective Coverage
- Lightweight & Soft Performance Fabric
- Left Chest Pocket
- Moisture Management Wicking
- Minimizes Odor
- Available In Tall (3 inches of extra length)
- 50 Wash Compliant 2" Solid Tape



**112-CT-LM**

HI-VIS SHORT SLEEVE SHIRT // MOISTURE-WICKING



AVAILABLE SIZES // SM - 6X

FEATURES INCLUDE

- 2" Retroreflective Tape with 360° Reflective Coverage
- Lightweight & Soft Performance Fabric
- 100% Polyester
- 4.1oz Birdseye Knit
- Moisture Management Wicking
- 75 Wash Compliant Segmented 2" Tape
- HACCP Compliant
- Minimizes Odor
- No Pocket



**104-CT-LM**

HI-VIS SHORT SLEEVE SHIRT // MOISTURE-WICKING



AVAILABLE SIZES // SM - 6X // LGT - 6XT

FEATURES INCLUDE

- 2" Retroreflective Tape with 360° Reflective Coverage
- Lightweight & Soft Performance Fabric
- 4.1oz Birdseye Knit
- 100% Polyester
- Moisture Management Wicking
- Minimizes Odor
- Available In Tall (3 inches of extra length)
- 75 Wash Compliant Segmented 2" Tape
- Left Chest Pocket



**104-CT-OR**

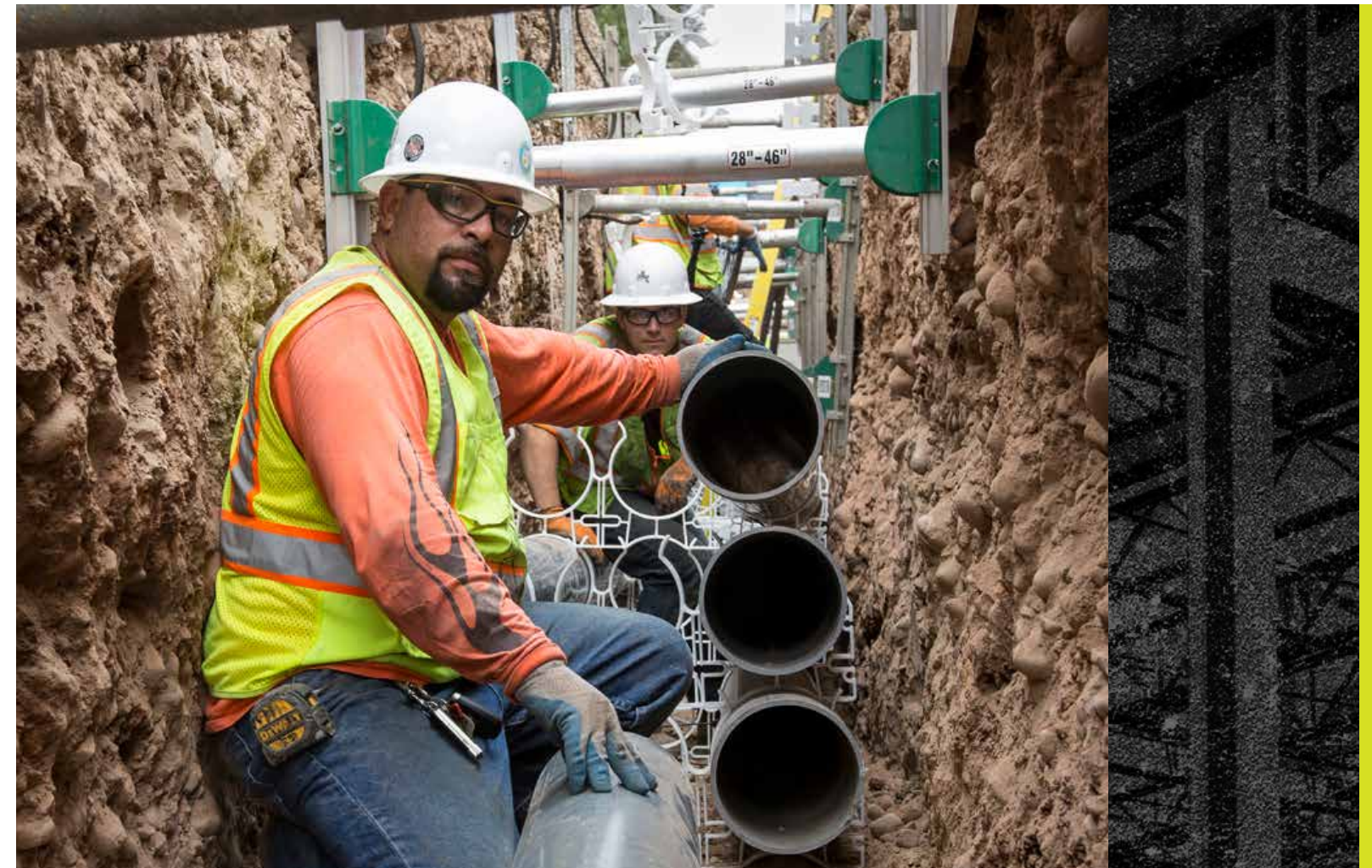
HI-VIS SHORT SLEEVE SHIRT // MOISTURE-WICKING



AVAILABLE SIZES // SM - 6X

FEATURES INCLUDE

- 2" Retroreflective Tape with 360° Reflective Coverage
- Lightweight & Soft Performance Fabric
- 4.1oz Birdseye Knit
- 100% Polyester
- Moisture Management Wicking
- Minimizes Odor
- 75 Wash Compliant Segmented 2" Tape
- Left Chest Pocket



BASICS

**GILDAN SHIRTS & SWEATSHIRTS**

Customizable for your team with **reflective logo placement** available! Perfect for employee trainees, the security market, EMTs, or everyday comfort.



**G200-BK // G200-NV**



**AVAILABLE SIZES:**  
SM - 5X

**MATERIAL:**  
• 6oz., 100% USA cotton  
• Made with sustainability and fairly grown USA cotton

**FEATURES:**  
• Tear-away label  
• Double-needle sleeve and bottom hem  
• Seamless double-needle 7/8" collar  
• Taped neck and shoulders  
• Deco Eligible



**G230-BK // G230-NV**



**AVAILABLE SIZES:**  
SM - 5X

**MATERIAL:**  
• 6oz., 100% USA cotton  
• Made with sustainability and fairly grown USA cotton

**FEATURES:**  
• Double-needle stitching throughout  
• Taped shoulder-to-shoulder  
• Five-point left chest pocket  
• 7/8" collar  
• Tear-away label  
• Deco Eligible



**G240-BK // G240-NV**



**AVAILABLE SIZES:**  
SM - 5X

**MATERIAL:**  
• 6oz., 100% USA cotton  
• Made with sustainability and fairly grown USA cotton

**FEATURES:**  
• Tear-away label  
• Double-needle sleeve and bottom hem  
• Seamless double-needle 7/8" collar  
• Taped neck and shoulders  
• Deco Eligible



**G241-BK // G241-NV**



**AVAILABLE SIZES:**  
SM - 5X

**MATERIAL:**  
• 6oz., 100% USA cotton  
• Made with sustainability and fairly grown USA cotton

**FEATURES:**  
• Taped shoulder-to-shoulder  
• Double-needle stitching throughout  
• Five-point left chest pocket  
• Ribbed cuffs  
• Tear-away label  
• Deco Eligible



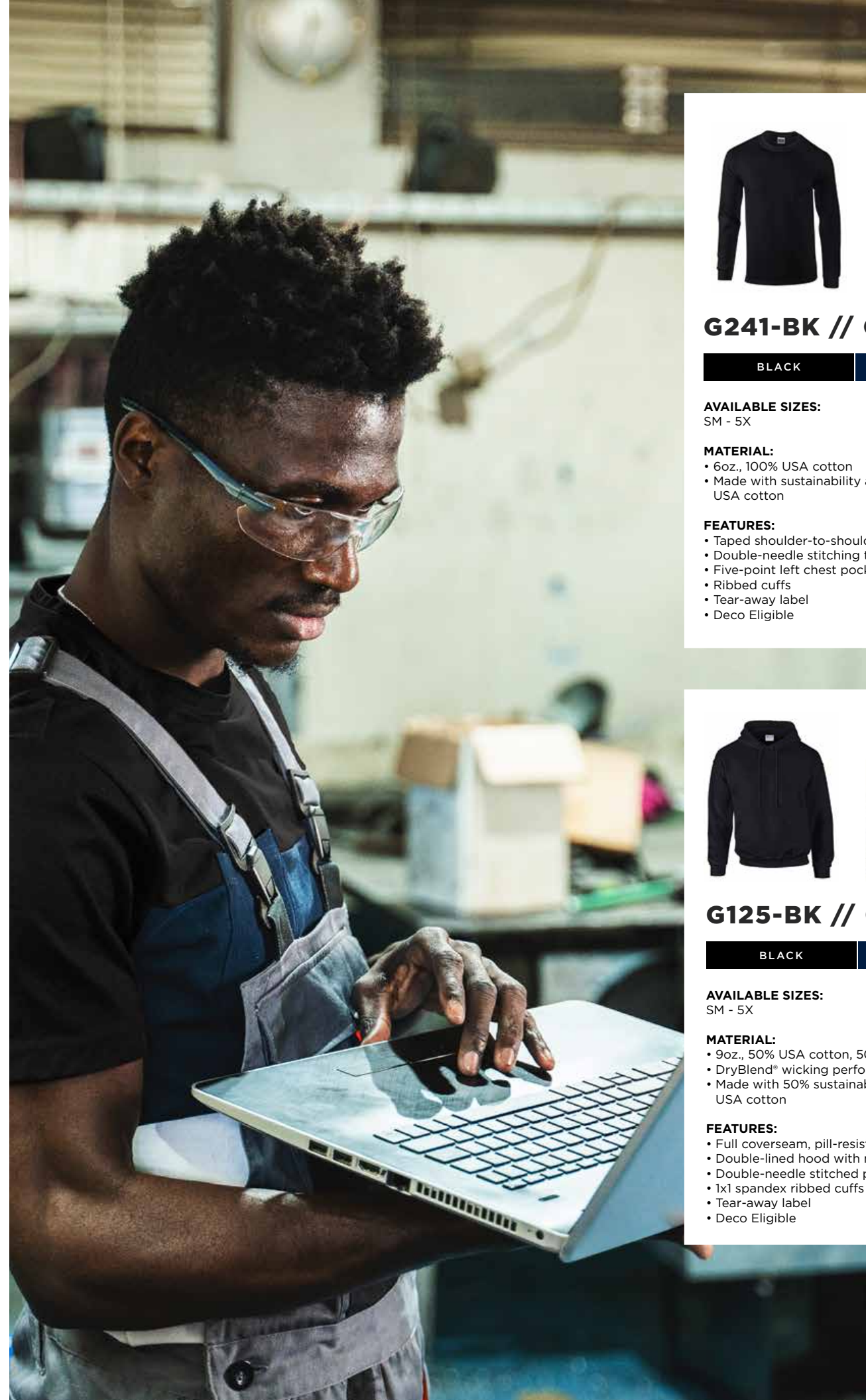
**G125-BK // G125-NV**



**AVAILABLE SIZES:**  
SM - 5X

**MATERIAL:**  
• 9oz., 50% USA cotton, 50% polyester  
• DryBlend® wicking performance  
• Made with 50% sustainability and fairly grown USA cotton

**FEATURES:**  
• Full coverseam, pill-resistant air jet yarn  
• Double-lined hood with matching drawstring  
• Double-needle stitched pouch pocket  
• 1x1 spandex ribbed cuffs and waistband  
• Tear-away label  
• Deco Eligible



*Gildan's manufacturing process utilizes 45% renewable energy. Gildan's Community Investment Program supports education, the environment, humanitarian aid and active living in the communities we do business in.*

▶ LONG SLEEVE SHIRTS

**200-BNT-LM**

HI-VIS LONG SLEEVE SHIRT // MOISTURE-WICKING



AVAILABLE SIZES // SM - 7X

FEATURES INCLUDE

- 4.1oz Birdseye Knit
- 100% Polyester
- Fluorescent High Visibility Shirt Material
- Lightweight & Soft Performance Fabric
- Moisture Management Wicking
- Minimizes Odor
- Left Chest Pocket



**204-ST-OR**

HI-VIS LONG SLEEVE SHIRT // MOISTURE-WICKING



AVAILABLE SIZES // SM - 6X

FEATURES INCLUDE

- 100% Polyester
- 4.1oz Birdseye Knit
- Lightweight & Soft Performance Fabric
- Moisture Management Wicking
- Minimizes Odor
- Available In Tall (3 inches of extra length) (LIME ONLY)
- Left Chest Pocket
- 50 Wash Compliant Solid 2" Tape
- 2" Retroreflective Tape with 360° Reflective Coverage



**202-CT-LM**

HI-VIS LONG SLEEVE SHIRT // MOISTURE-WICKING



AVAILABLE SIZES // SM - 7X

FEATURES INCLUDE

- 4.1oz Birdseye Knit
- Lightweight & Soft Performance Fabric
- 2" Retroreflective Tape with 360° Reflective Coverage
- 100% Polyester
- Moisture Management Wicking
- Minimizes Odor
- 75 Wash Compliant Segmented 2" Tape
- Left Chest Pocket



**204-CT-LM**

HI-VIS LONG SLEEVE SHIRT // MOISTURE-WICKING



AVAILABLE SIZES // SM - 6X // LGT - 6XT

FEATURES INCLUDE

- 100% Polyester
- 4.1oz Birdseye Knit
- Lightweight & Soft Performance Fabric
- 2" Retroreflective Tape with 360° Reflective Coverage
- Moisture Management Wicking
- Minimizes Odor
- Available In Tall (3 inches of extra length)
- 75 Wash Compliant Segmented 2" Tape
- Left Chest Pocket



**204-ST-LM**

HI-VIS LONG SLEEVE SHIRT // MOISTURE-WICKING



AVAILABLE SIZES // SM - 6X // LGT - 6XT

FEATURES INCLUDE

- 100% Polyester
- 4.1oz Birdseye Knit
- Lightweight & Soft Performance Fabric
- Moisture Management Wicking
- Minimizes Odor
- Available In Tall (3 inches of extra length) (LIME ONLY)
- Left Chest Pocket
- 50 Wash Compliant Solid 2" Tape
- 2" Retroreflective Tape with 360° Reflective Coverage



**300-BNT-LM**

HI-VIS SHORT SLEEVE POLO SHIRT // MOISTURE-WICKING



AVAILABLE SIZES // SM - 6X

FEATURES INCLUDE

- Lightweight & Soft Performance Fabric
- Moisture Management Wicking
- Rib Knit Collar
- No Pocket
- 100% Polyester
- 4.1oz Birdseye Knit
- 3-Button Placket
- Minimizes Odor



▶ POLOS / WORK SHIRTS

**300-BNT-OR**

**HI-VIS SHORT SLEEVE POLO SHIRT // MOISTURE-WICKING**



AVAILABLE SIZES // SM - 6X

**FEATURES INCLUDE**

- Lightweight & Soft Performance Fabric
- Moisture Management Wicking
- Rib Knit Collar
- No Pocket
- 100% Polyester
- 4.1oz Birdseye Knit
- 3-Button Placket
- Minimizes Odor



**302-CT-LB**

**HI-VIS SHORT SLEEVE POLO SHIRT // MOISTURE-WICKING**



AVAILABLE SIZES // SM - 6X

**FEATURES INCLUDE**

- 100% Polyester
- 4.1oz Birdseye Knit
- 3-Button Placket
- Lightweight & Soft Performance Fabric
- 2" Retroreflective Tape with 360° Reflective Coverage
- Moisture Management Wicking
- Rib Knit Collar
- 75 Wash Compliant Segmented 2" Tape
- No Pocket
- Minimizes Odor



**302-CT-LM**

**HI-VIS SHORT SLEEVE POLO SHIRT // MOISTURE-WICKING**



AVAILABLE SIZES // SM - 6X

**FEATURES INCLUDE**

- 100% Polyester
- 4.1oz Birdseye Knit
- 3-Button Placket
- Lightweight & Soft Performance Fabric
- 2" Retroreflective Tape with 360° Reflective Coverage
- Moisture Management Wicking
- Rib Knit Collar
- No Pocket
- Minimizes Odor
- 75 Wash Compliant Segmented 2" Tape



**304-ST-LM**

**HI-VIS SHORT SLEEVE POLO SHIRT // MOISTURE-WICKING**



AVAILABLE SIZES // SM - 8X

**FEATURES INCLUDE**

- 100% Polyester
- 4.1oz Birdseye Knit
- 3-Button Placket
- Lightweight & Soft Performance Fabric
- No Pocket
- Minimizes Odor
- Moisture Management Wicking
- Rib Knit Collar
- 50 Wash Compliant 2" Solid Tape
- 2" Retroreflective Tape with 360° Reflective Coverage



**302-CT-OR**

**HI-VIS SHORT SLEEVE POLO SHIRT // MOISTURE-WICKING**



AVAILABLE SIZES // SM - 6X

**FEATURES INCLUDE**

- 100% Polyester
- 4.1oz Birdseye Knit
- 3-Button Placket
- Lightweight & Soft Performance Fabric
- 2" Retroreflective Tape with 360° Reflective Coverage
- Moisture Management Wicking
- Rib Knit Collar
- 75 Wash Compliant Segmented 2" Tape
- No Pocket
- Minimizes Odor



**314-ST-LM**

**HI-VIS LONG SLEEVE POLO SHIRT // MOISTURE-WICKING**



AVAILABLE SIZES // SM - 6X

**FEATURES INCLUDE**

- 100% Polyester
- 4.1oz Birdseye Knit
- 3-Button Placket
- Lightweight & Soft Performance Fabric
- Moisture Management Wicking
- Rib Knit Collar
- 50 Wash Compliant 2" Solid Tape
- No Pocket
- Minimizes Odor
- 2" Retroreflective Tape with 360° Reflective Coverage



▶ POLOS / WORK SHIRTS

**316-CT-LN**

**HI-VIS LONG SLEEVE POLO SHIRT // MOISTURE-WICKING**



**AVAILABLE SIZES // SM - 7X**

**FEATURES INCLUDE**

- 4.1oz Birdseye Knit Polyester
- 2" Retroreflective Tape with 360° Reflective Coverage
- ANSI Class 3 Compliant
- 3-Button Placket
- Minimizes Odor
- Two-Tone High Visibility Lime & Navy
- Left Chest Pocket
- Navy Bottom and Cuffs Hide Dust and Soil
- 75 Wash Compliant Segmented 2" Tape
- Left Chest Pocket
- Moisture Management Wicking



UPF 35

MOISTURE-WICKING

WASHES

**334-CT-LN**

**HI-VIS SHORT SLEEVE POLO SHIRT // MOISTURE-WICKING**



**AVAILABLE SIZES // SM - 7X**

**FEATURES INCLUDE**

- 100% Polyester
- 4.1oz Birdseye Knit
- 2" Retroreflective Tape with 360° Reflective Coverage
- Lightweight & Soft Performance Fabric
- Moisture Management Wicking
- Left Chest Pocket
- Contrasting Navy Collar, Sleeve Welt, Inner Placket, and Buttons
- 3-Button Placket
- 75 Wash Compliant Segmented 2" Tape
- Minimizes Odor



UPF 35

MOISTURE-WICKING

WASHES

**342-CT-LB**

**HI-VIS SHORT SLEEVE POLO SHIRT // MOISTURE-WICKING**



**AVAILABLE SIZES // SM - 6X**

**FEATURES INCLUDE**

- 100% Polyester
- Lightweight & Soft Performance Fabric
- 4.1oz Birdseye Knit
- Moisture Management Wicking
- Rib Knit Collar
- 3 Snapped Steel "Gripper" Placket
- 2" Retroreflective Tape with 360° Reflective Coverage
- Meets HACCP Standards
- 75 Wash Compliant Segmented 2" Tape
- No Pocket
- Minimizes Odor



UPF 35

MOISTURE-WICKING

WASHES



CONSTRUCTION

ROADWORK/DOT

RAIL/FREIGHT

LOGISTICS

PUBLIC SAFETY

**SAFETY FOR EVERY INDUSTRY**



# NEW PRODUCT LINE



## FLAME-RESISTANT COMPLIANT HI-VIS CLOTHING

Introducing our new FR product line, featuring premium American-made fabrics by industry leaders Westex® by Milliken and Pyrotec by antex®. Manufactured in the Western Hemisphere and meticulously tested to surpass industry standards.

Why choose RAreflectFR? Because when it comes to saving lives, quality and visibility matter. Our FR products provide unparalleled protection, ensuring safety in critical situations.

**COMFORT,  
BREATHABILITY,  
DURABILITY AND  
FLAME RESISTANCE FOR  
THE LIFE OF THE GARMENT.**

TO PLACE AN ORDER FOR RAFLECTFR, EMAIL US AT [raorders@reflectiveapparel.com](mailto:raorders@reflectiveapparel.com)

TO DISCUSS AND REQUEST LITERATURE ON THE NEW RAFLECTFR LINE WITH YOUR NATIONAL ACCOUNT MANAGER, EMAIL US AT [sales@reflectiveapparel.com](mailto:sales@reflectiveapparel.com)



### 205-FR-GS-LM

LIME

ANSI CLASS 3 TYPE R  
ASTM F2621/F2621M-22 TESTED

AVAILABLE SIZES:  
SM - XL / 2X - 6X



**FR HI-VIS KNIT SHIRT - 7 OZ.**  
• 50% FR Modacrylic / 40% Lyocell / 10% Twaron  
• ATPV=16  
• CSA Z96  
• HRC Cat 2  
• NFPA 70E (ASTM 1506)  
• NFPA 2112 / NFPA 2113



### 509-FR-GS-LM

LIME

ANSI CLASS 2 TYPE R  
ASTM F2621/F2621M-22 TESTED

AVAILABLE SIZES:  
SM - XL / 2X - 5X



**FR VEST - 5.8 OZ.**  
• 48% Lyocell / 40% Modacrylic / 12% Aramid  
• ATPV=9.1 cal/cm2 result  
• CSA Z96  
• HRC Cat 2  
• NFPA 70E (ASTM 1506)  
• NFPA 2112 / NFPA 2113



### 510-FR-GS-LM

LIME

ANSI CLASS 3 TYPE R  
ASTM F2621/F2621M-22 TESTED

AVAILABLE SIZES:  
SM - XL / 2X - 5X



**FR VEST - 5.8 OZ.**  
• 48% Lyocell / 40% Modacrylic / 12% Aramid  
• ATPV=9.1 cal/cm2 result  
• CSA Z96  
• HRC Cat 2  
• NFPA 70E (ASTM 1506)  
• NFPA 2112 / NFPA 2113

▶ VESTS

**502-SX-LM**

**HI-VIS VEST // BREAKAWAY**



**AVAILABLE SIZES // SM - 6X**

**FEATURES INCLUDE**

- 100% Mesh Polyester
- 2" Retroreflective Tape with 360° Reflective Coverage
- 5 Point Breakaway (Shoulders, Sides and Front)
- 2" Adjustable Hook & Loop Front Closure
- Mic Tab
- 2 Internal Front Pockets
- Closeable Clear Pocket ID



BREAKAWAY

**505-SX-LM**

**HI-VIS VEST // BREAKAWAY // CONTRASTING TRIM // ZIPPED**



**AVAILABLE SIZES // SM - 7X**

**FEATURES INCLUDE**

- 100% Polyester
- 2" Contrasting Retroreflective Tape with 360° Reflective Coverage
- 5 Point Breakaway (Shoulders, Sides and Front)
- Breakaway Zip Front Closure
- Heavy Duty Mic Tab
- 7 pockets



BREAKAWAY

**502-SX-OR**

**HI-VIS VEST // BREAKAWAY**



**AVAILABLE SIZES // SM - 6X**

**FEATURES INCLUDE**

- 100% Mesh Polyester
- 2" Retroreflective Tape with 360° Reflective Coverage
- 5 Point Breakaway (Shoulders, Sides and Front)
- 2" Adjustable Hook & Loop Front Closure
- Mic Tab
- 2 Internal Front Pockets
- Closeable Clear Pocket ID



BREAKAWAY

**508-ST-OR**

**HI-VIS VEST // BREAKAWAY // ZIPPED**



**AVAILABLE SIZES // SM - 5X**

**FEATURES INCLUDE**

- 100% Polyester
- 2" Retroreflective Tape with 360° Reflective Coverage
- Clear Credential/ID Pocket with Hook & Loop closure
- 5 Point Breakaway (Shoulders, Sides and Front)
- Breakaway Zip Front Closure
- Heavy Duty Mic Tab
- 7 pockets



BREAKAWAY

**505-ST-LM**

**HI-VIS VEST // BREAKAWAY // CONTRASTING TRIM // ZIPPED**



**AVAILABLE SIZES // SM - 7X**

**FEATURES INCLUDE**

- 100% Polyester
- 2" Contrasting Retroreflective Tape with 360° Reflective Coverage
- Breakaway Zip Front Closure
- 5 Point Breakaway (Shoulders, Sides and Front)
- Mic Tab
- 7 Pockets



BREAKAWAY

**508-SX-LM**

**HI-VIS VEST // BREAKAWAY // ZIPPED**



**AVAILABLE SIZES // SM - 5X**

**FEATURES INCLUDE**

- 100% Polyester
- 2" Retroreflective Tape with 360° Reflective Coverage
- Clear Credential/ID Pocket with Hook & Loop closure
- X-Back Configuration
- 5 Point Breakaway (Shoulders, Sides and Front)
- Breakaway Zip Front Closure
- Heavy Duty Mic Tab
- 7 pockets



BREAKAWAY

▶ VESTS

**508-SX-OR**

HI-VIS VEST // BREAKAWAY // ZIPPED



AVAILABLE SIZES // SM - 5X

FEATURES INCLUDE

- 100% Polyester
- 2" Retroreflective Tape with 360° Reflective Coverage
- Clear Credential/ID Pocket with Hook & Loop closure
- X-Back Configuration
- 5 Point Breakaway (Shoulders, Sides and Front)
- Breakaway Zip Front Closure
- Heavy Duty Mic Tab
- 7 pockets



**540-GX-LM**

HI-VIS VEST // CONTRASTING TRIM // WOMEN'S



AVAILABLE SIZES // SM - 4X

FEATURES INCLUDE

- 100% Woven Polyester Women's Breakaway Vest
- Solid Front, Mesh Back
- Toggle Adjustment at Waistline for Best Fit
- Reflective Piping to Outline Female Silhouette
- 2" Contrasting Retroreflective Tape with 360° Reflective Coverage
- Multiple Pockets
- Document Pouch on Back
- Fall Protection Cut-Out



**515-CS-LM**

HI-VIS VEST // CONTRASTING TRIM // ZIPPED



AVAILABLE SIZES // SM - 2X // 3X-5X

FEATURES INCLUDE

- 100% Polyester Mesh
- 2" Contrasting Retroreflective Tape with 360° Reflective Coverage
- Lower Front Cargo Pockets
- Large back document pocket with zipper closure
- Zip Front Closure
- Lime & Black
- Two Mic Tabs
- Chest Pocket
- Chest Pens Slots
- Clear Credential Pocket



**549-ST-LM**

HI-VIS VEST // BREAKAWAY



AVAILABLE SIZES // SM - 5X

FEATURES INCLUDE

- 100% Polyester
- 2" Retroreflective Tape with 360° Reflective Coverage
- 4 Point Breakaway (Sides and Front)
- High Cut to Allow for Duty Belt
- 2 Mic Tabs
- 2 Pen/Pencil Slots
- V-Neck 6" Adjustable Hook & Loop Wrap Waist Closure



**515-CS-LB**

HI-VIS VEST // CONTRASTING TRIM // ZIPPED



AVAILABLE SIZES // MD - 2X // 3X-5X

FEATURES INCLUDE

- 100% Polyester Mesh
- 2" Contrasting Retroreflective Tape with 360° Reflective Coverage
- Lower Front Cargo Pockets
- Large back document pocket with zipper closure
- Zip Front Closure
- Lime & Black
- Two Mic Tabs
- Chest Pocket
- Chest Pens Slots
- Clear Credential Pocket



**551-ST-LM**

HI-VIS VEST // BREAKAWAY // ZIPPED



AVAILABLE SIZES // SM - 5X

FEATURES INCLUDE

- 100% Polyester
- 2" Retroreflective Tape with 360° Reflective Coverage
- 4 Point Breakaway (Shoulders and Sides)
- 6" Adjustable Hook & Loop Wrap Waist Closure
- Zip Front Closure



## ▶ VESTS

**566-GX-LM****HI-VIS VEST // BREAKAWAY // CONTRASTING TRIM****AVAILABLE SIZES // SM - 8XL****FEATURES INCLUDE**

- 100% Polyester Mesh
- 2" Contrasting Retroreflective Tape with 360° Reflective Coverage
- Fall Protection Cut Out
- Inside Pockets, Chest Pocket
- Mic Tab
- Adjustable at the Waist Line
- Adjust in the Winter to Fit Over a Jacket
- Increased Amount of Mesh
- Comfortable Year Round



BREAKAWAY

**572-ET-LM****HI-VIS VEST // BREAKAWAY****AVAILABLE SIZES // SM - 8X****FEATURES INCLUDE**

- 100% Mesh Polyester
- 2" Retroreflective Tape with 360° Reflective Coverage
- 5 Point Breakaway (Shoulders, Sides and Front)
- Black Mic Tab
- Chest Pocket
- Adjustable Side Wrap Closure



BREAKAWAY





# NEW PRODUCT

## ENHANCED VISIBILITY VESTS

Customizable for your team with **reflective logo placement** available! Perfect for employee trainees, departmental color-coding, or event staff.



### 500-GT-BK

BLACK

**CLASS 1 TYPE O**

**AVAILABLE SIZES:**  
XS-4X

**MATERIAL:**  
• 100% polyester mesh

**FEATURES:**  
• Enhanced visibility vest with contrast tape  
• 5 pockets  
• Clear credential pocket  
• 2 mic tabs  
• Front zipper closure  
• 2" Retroreflective Tape with 360° Reflective Coverage

### 500-GT-RB

ROYAL BLUE

**CLASS 1 TYPE O**

**AVAILABLE SIZES:**  
XS-4X

**MATERIAL:**  
• 100% polyester mesh

**FEATURES:**  
• Enhanced visibility vest with contrast tape  
• 5 pockets  
• Clear credential pocket  
• 2 mic tabs  
• Front zipper closure  
• 2" Retroreflective Tape with 360° Reflective Coverage

### 500-GT-RD

RED

**CLASS 1 TYPE O**

**AVAILABLE SIZES:**  
XS-4X

**MATERIAL:**  
• 100% polyester mesh

**FEATURES:**  
• Enhanced visibility vest with contrast tape  
• 5 pockets  
• Clear credential pocket  
• 2 mic tabs  
• Front zipper closure  
• 2" Retroreflective Tape with 360° Reflective Coverage

### 500-GT-GN

GREEN

**CLASS 1 TYPE O**

**AVAILABLE SIZES:**  
XS-4X

**MATERIAL:**  
• 100% polyester mesh

**FEATURES:**  
• Enhanced visibility vest with contrast tape  
• 5 pockets  
• Clear credential pocket  
• 2 mic tabs  
• Front zipper closure  
• 2" Retroreflective Tape with 360° Reflective Coverage

▶ VESTS

**576-ET-LM**

**HI-VIS VEST // CONTRASTING TRIM // ZIPPED**



**AVAILABLE SIZES // SM - 8X**

**FEATURES INCLUDE**

- 100% Mesh Polyester
- 2" Contrasting Retroreflective Tape with 360° Reflective Coverage
- Adjustable Side Wrap Closure
- Front Pockets
- Front Zipper
- Gray Mic Tab



**582-ET-OR**

**HI-VIS VEST // BREAKAWAY**



**AVAILABLE SIZES // SM - 5X**

**FEATURES INCLUDE**

- 2" Retroreflective Tape with 360° Reflective Coverage
- 5 Point Breakaway (Shoulders, Sides and Front)
- 100% Mesh Polyester
- Drop Shoulders
- Internal Front Pocket



**581-ET-LM**

**HI-VIS VEST // ZIPPED**



**AVAILABLE SIZES // SM - 5X**

**FEATURES INCLUDE**

- 100% Mesh Polyester
- 2" Retroreflective Tape with 360° Reflective Coverage
- Zip Closure
- Internal Front Pocket



**582-CS-LM**

**HI-VIS VEST // BREAKAWAY**



**AVAILABLE SIZES // SM - 7X**

**FEATURES INCLUDE**

- 2" Contrasting Retroreflective Tape with 360° Reflective Coverage
- 5 Point Breakaway (Shoulders, Sides and Front)
- 100% Mesh Polyester
- Drop Shoulders
- Internal Front Pocket



**582-ET-LM**

**HI-VIS VEST // BREAKAWAY**



**AVAILABLE SIZES // SM - 5X**

**FEATURES INCLUDE**

- 2" Retroreflective Tape with 360° Reflective Coverage
- 5 Point Breakaway (Shoulders, Sides and Front)
- 100% Mesh Polyester
- Drop Shoulders
- Internal Front Pocket



**586-ET-LM**

**HI-VIS VEST // CONTRASTING TRIM // ZIPPED**



**AVAILABLE SIZES // SM - 6X**

**FEATURES INCLUDE**

- 100% Polyester Mesh
- 2" Contrasting Retroreflective Tape with 360° Reflective Coverage
- 2 Internal Front Pockets
- External Flap Closure Pocket
- External Cell Phone Pocket
- Zip Front Closure



▶ VESTS

**586-ET-OR**

**HI-VIS VEST // CONTRASTING TRIM // ZIPPED**



**AVAILABLE SIZES // SM - 6X**

**FEATURES INCLUDE**

- 100% Polyester Mesh
- 2" Contrasting Retroreflective Tape with 360° Reflective Coverage
- 2 Internal Front Pockets
- External Flap Closure Pocket
- External Cell Phone Pocket
- Zip Front Closure



**587-ET-LM**

**HI-VIS VEST**



**AVAILABLE SIZES // SM - 5X**

**FEATURES INCLUDE**

- 100% Polyester Mesh
- 2" Retroreflective Tape with 360° Reflective Coverage
- Pockets Made with Double Woven 100% Polyester
- Double Banded Horizontal Torso
- Zip Front
- Durable Black Trim for Strength With Snap Closure and Grommets
- 12 Pockets
- Back Document Pocket



**589-ET-LM**

**HI-VIS VEST // CONTRASTING TRIM // ZIPPED**



**AVAILABLE SIZES // SM - 5X**

**FEATURES INCLUDE**

- 100% Polyester Mesh
- 360 Degree Reflective Coverage
- Heavy Duty Zip Front Closure
- 2" Contrasting Retroreflective Tape with 360° Reflective Coverage
- D-Ring Pass-Through for Fall Arrest Gear
- 10 Pockets
- Back Document Pocket
- Mic Tabs



**504-ST-LM**

**HI-VIS VEST // BREAKAWAY // CONTRASTING TRIM // ZIPPED**



**AVAILABLE SIZES // SM - 7X**

**FEATURES INCLUDE**

- 100% Knit Polyester Mesh Sleeved Vest
- 2" Contrasting Retroreflective Tape with 360° Reflective Coverage
- 5 Point Breakaway (Shoulders-Sleeves, Sides and Front)
- Breakaway Zip Front Closure
- Heavy Duty Mic Tab
- 7 Pockets



**533-ET-LM**

**HI-VIS VEST**



**AVAILABLE SIZES // SM - 6X**

**FEATURES INCLUDE**

- 100% Polyester
- 2" Retroreflective Tape with 360° Reflective Coverage
- Hook & Loop Front Closure
- Double External Chest Pockets



**578-ET-LM**

**HI-VIS VEST // CONTRASTING TRIM // ZIPPED**



**AVAILABLE SIZES // SM - 7X**

**FEATURES INCLUDE**

- 100% Woven Polyester Mesh
- 2" Contrasting Retroreflective Tape with 360° Reflective Coverage
- Heavy Duty Zip Front Closure
- Grommets
- 12 Pockets
- Back Document Pocket



▶ VESTS

**583-ET-LM**

HI-VIS VEST // ZIPPED



AVAILABLE SIZES // SM - 5X

FEATURES INCLUDE

- 100% Knit Polyester Mesh Sleeved Vest
- 2" Retroreflective Tape with 360° Reflective Coverage
- Zip Closure
- Internal Front Pocket
- Hook and Loop



**588-ET-OR**

HI-VIS VEST // CONTRASTING TRIM // ZIPPED



AVAILABLE SIZES // SM - 6X

FEATURES INCLUDE

- 100% Woven Polyester Mesh
- 2" Contrasting Retroreflective Tape with 360° Reflective Coverage
- Zip Front Closure
- 2 Internal Front Pockets
- Mic Tab
- External Flap Closure Pocket
- External Cell Phone Pocket



**588-ET-LM**

HI-VIS VEST // CONTRASTING TRIM // ZIPPED



AVAILABLE SIZES // SM - 6X

FEATURES INCLUDE

- 100% Woven Polyester Mesh
- 2" Contrasting Retroreflective Tape with 360° Reflective Coverage
- Zip Front Closure
- 2 Internal Front Pockets
- Mic Tab
- External Flap Closure Pocket
- External Cell Phone Pocket



**591-GT-LM**

HI-VIS VEST // BREAKAWAY // CONTRASTING TRIM



AVAILABLE SIZES // SM - 9X

FEATURES INCLUDE

- 100% Polyester Mesh
- 2" Contrasting Retroreflective Tape with 360° Reflective Coverage
- 5 Point Breakaway (Front, Shoulders-Sleeves, and Sides)
- 7 Pockets
- Breakaway Hook & Loop Front Closure
- Adjustable Side Wraps & Sleeves



# WHY REFLECTIVE APPAREL

Rapid Delivery

Vast Inventory

Sizes (S-8XLT)

SINCE 1989, REFLECTIVE APPAREL HAS DESIGNED, MANUFACTURED, STOCKED, AND EMBELLISHED QUALITY HIGH VISIBILITY APPAREL. OUR DESIGN AND ENGINEERING STAFF IS ALWAYS MINDFUL OF COMFORT, LONGEVITY, FIT AND DURABILITY BOTH FOR THE EMPLOYER AND THE WEARER.





# BRAND YOUR GEAR

Our customer base trusts us to personalize garments, and we staff an in-house art department to ensure that companies project the brand image that they desire.

Nearly 90% of the products that leave our docks are logoed via screen print or ink transfer options, and many are drop shipped directly to the end user.



We logo your gear in-house!

## PERSONALIZE YOUR COMPANY UNIFORM

- Improve your corporate image
- Reinforce your branding
- Advertise your company
- Increases professionalism



▶ HATS & ACCESSORIES

**803-ST-LM**

**HI-VIS BASEBALL HAT**



AVAILABLE SIZES // FITS MOST

**FEATURES INCLUDE**

- 100% Polyester
- Retroreflective Tape with 360° Reflective Coverage
- Adjustable Baseball Hat
- Cotton Sweatband Mesh Side Panels



**813-ST-LB**

**HI-VIS BASEBALL HAT**



AVAILABLE SIZES // FITS MOST

**FEATURES INCLUDE**

- 100% Polyester
- Cotton Sweatband Mesh Side Panels
- Retroreflective Silver Tape
- Two-Tone High Visibility Fluorescent Lime & Black
- Adjustable Baseball Hat



**803-ST-OR**

**HI-VIS BASEBALL HAT**



AVAILABLE SIZES // FITS MOST

**FEATURES INCLUDE**

- 100% Polyester
- Retroreflective Tape with 360° Reflective Coverage
- Adjustable Baseball Hat
- Cotton Sweatband Mesh Side Panels



**804-ST-LM**

**HI-VIS RANGER HAT // CONTRASTING TRIM**



AVAILABLE SIZES // FITS MOST

**FEATURES INCLUDE**

- 100% Polyester
- Retroreflective Tape with 360° Reflective Coverage
- Drawstring
- Mesh Side Panels



**803-ST-LB**

**HI-VIS BASEBALL HAT**



AVAILABLE SIZES // FITS MOST

**FEATURES INCLUDE**

- 100% Polyester
- Retroreflective Tape with 360° Reflective Coverage
- Adjustable Baseball Hat
- Cotton Sweatband Mesh Side Panels
- Two-Tone High Visibility Fluorescent Lime & Black



**804-ST-OR**

**HI-VIS RANGER HAT // CONTRASTING TRIM**



AVAILABLE SIZES // FITS MOST

**FEATURES INCLUDE**

- 100% Polyester
- Retroreflective Tape with 360° Reflective Coverage
- Drawstring
- Mesh Side Panels



▶ HATS & ACCESSORIES

**808-RT-LM**

**HI-VIS CUFFED BEANIE**



**AVAILABLE SIZES // FITS MOST**

**FEATURES INCLUDE**

- 100% Polyester
- Knit Retroreflective Thread
- 360° Reflective Coverage

**ERB-19221-WH**

**FULL BRIM 4PT RATCHET SUSPENSION HARD HAT**



**AVAILABLE SIZES // FITS MOST**

**FEATURES INCLUDE**

- Molded from high density polyethylene
- Provides protection from sun and rain
- Secure-Fit ratchet features an easy turn knob
- Adjusts to head sizes 6 1/2" - 8"
- Made in USA
- Meets ANSI Z89.1 Type 1, Class C, E & G requirements

**808-RT-OR**

**HI-VIS CUFFED BEANIE**



**AVAILABLE SIZES // FITS MOST**

**FEATURES INCLUDE**

- 100% Polyester
- Knit Retroreflective Thread
- 360° Reflective Coverage

**ERB-19361-WH**

**STANDARD 4PT RATCHET SUSPENSION HARD HAT**



**AVAILABLE SIZES // FITS MOST**

**FEATURES INCLUDE**

- Molded from high density polyethylene
- Features short peak and trim profile
- Secure-Fit ratchet features an easy turn knob
- Adjusts to head sizes 6 1/2" - 8"
- Meets ANSI Z89.1 Type 1, Class C, E and G requirements

**809-ST-LM**

**HI-VIS NECK SHADE // CONTRASTING TRIM**



**AVAILABLE SIZES // FITS MOST**

**FEATURES INCLUDE**

- ANSI/ISEA Accessories Class Headwear
- 100% Polyester
- Retroreflective Silver Tape at Nape
- Adjustable Baseball Hat
- Woven Polyester Mesh in Fluorescent Lime is Lightweight & Breathable
- Hard Hat is Not Included

**ERB-19430-HY**

**HI-VIS LIME FULL BRIM VENTED RATCHET SUSPENSION HARD HAT**



**AVAILABLE SIZES // FITS MOST**

**AMERICANA VENTED FEATURES INCLUDE**

- 4-point woven nylon suspension
- Moisture-wicking brow pad is removable, washable and replaceable
- Vents on top of hard hat increase air circulation, keeping head cool and comfortable
- Accommodates a chin strap
- Goggle retaining slots on suspension
- Both Mega Ratchet Suspensions adjust to head sizes 6 1/2" - 8"
- Meets ANSI/ISEA Z89.1, Type I, Class C requirements

▶ HATS & ACCESSORIES

**ERB-19431-WH**

**FULL BRIM VENTED RATCHET SUSPENSION HARD HAT**



AVAILABLE SIZES // FITS MOST

**FEATURES INCLUDE**

- Removable & Washable Moisture-Wicking Brow Pad
- Vented On Top For Circulation
- Full Brim Hard Hat



**ERB-19911-WH**

**FULL BRIM 6PT RATCHET SUSPENSION HARD HAT**



AVAILABLE SIZES // FITS MOST

**FEATURES INCLUDE**

- Molded from high density polyethylene
- Provides protection from sun and rain
- Secure-Fit ratchet features an easy turn knob
- Adjusts to head sizes 6 1/2" - 8"
- Made in USA
- Meets ANSI Z89.1 Type 1 Class C, E & G requirements

**ERB-19450-HY**

**HI-VIS STANDARD VENTED 4PT RATCHET SUSPENSION HARD HAT**



AVAILABLE SIZES // FITS MOST

**FEATURES INCLUDE**

- Removable & Washable Moisture-Wicking Brow Pad
- Vented On Top For Circulation
- Standard Hard Hat

**ERB-19951-WH**

**STANDARD 6PT RATCHET SUSPENSION HARD HAT**



AVAILABLE SIZES // FITS MOST

**FEATURES INCLUDE**

- Removable & Washable Moisture-Wicking Brow Pad
- Standard Hard Hat

**ERB-19451-WH**

**STANDARD VENTED 4PT RATCHET SUSPENSION HARD HAT**



AVAILABLE SIZES // FITS MOST

**FEATURES INCLUDE**

- Removable & Washable Moisture-Wicking Brow Pad
- Vented On Top For Circulation
- Standard Hard Hat



**ORA17720-WH**

**REFLECTIVE HELMET STRIP**



**FEATURES INCLUDE**

- 1" x 4" inches
- 16 Per Sheet

**ORA17724-LM**

**REFLECTIVE HELMET STRIP**



**FEATURES INCLUDE**

- 1" x 4" inches
- 16 Per Sheet

▶ HATS & ACCESSORIES

**820-NT-LR**

**HI-VIS STANDARD HOOD // BREATHABLE // WATERPROOF**



**AVAILABLE SIZES //** REGULAR & JUMBO

**FEATURES INCLUDE**

- For 461
- Poly 200D Fabric Oxford with PTFE Film
- Pass ANSI107 and ASTM F1670/1671 for Protection from Bloodborne Pathogens
- Adjustable Drawstrings
- Hook & Loop Closure
- Zip-in Attachment
- Compatible With 461STLR First Responder Jacket



**821-NT-LR**

**HI-VIS STANDARD HOOD // BREATHABLE // WATERPROOF**



**AVAILABLE SIZES //** REGULAR & JUMBO

**FEATURES INCLUDE**

- For 461
- Poly 200D Fabric Oxford with PTFE Film
- Pass ANSI107 and ASTM F1670/1671 for Protection from Bloodborne Pathogens
- Contoured Bill
- Adjustable Drawstrings
- Hook & Loop Closure
- Zip-in Attachment
- Compatible With 461STLR First Responder Jacket



**799-ST-LM**

**HI-VIS LEG COVERS**



**AVAILABLE SIZES //** ONE SIZE

**FEATURES INCLUDE**

- 100% Knit Mesh Polyester Mesh
- 2" Retroreflective Tape with 360° Reflective Coverage
- Hook & Loop Closure



**901-NT-LM**

**ID POUCH**



**AVAILABLE SIZES //** ONE SIZE

**FEATURES INCLUDE**

- Clear Vinyl Pouch
- Horizontal Layout
- 100% Polyester Strap
- Used to Hold Credentials or IDs
- Steel Gripper Snap Closure on Fabric Loop

**901-NT-OR**

**ID POUCH**



**AVAILABLE SIZES //** ONE SIZE

**FEATURES INCLUDE**

- Clear Vinyl Pouch
- Horizontal Layout
- 100% Polyester Strap
- Used to Hold Credentials or IDs
- Steel Gripper Snap Closure on Fabric Loop

**921-ST-LM**

**HI-VIS ELASTIC ARM & LEG BAND HOOK & LOOP CLOSURE**



**AVAILABLE SIZES //** FITS MOST

**FEATURES INCLUDE**

- ANSI 2015 Accessory
- 2" Retroreflective Tape with 360° Reflective Coverage
- 100% Polyester
- For Use As an Ankle Band, Leg Band, or Arm Band
- Hook and Loop Closure

## ▶ HATS & ACCESSORIES

### 930-ST-LM

HI-VIS DUFFLE BAG // POCKETS // WATERPROOF



AVAILABLE SIZES // ONE SIZE

**FEATURES INCLUDE**

- Padded Shoulder Strap
- ID Holder
- Retroreflective Silver Tape



WATERPROOF

### 931-LM

HI-VIS BACKPACK // PADDED // WATERPROOF



AVAILABLE SIZES // ONE SIZE

**FEATURES INCLUDE**

- Holds 17-inch Laptop
- Padded Laptop Compartment
- Bottle Holders
- Retroreflective Silver Tape



WATERPROOF



MAKING  
PEOPLE  
**VISIBLE**  
MEANS  
MAKING  
PEOPLE  
SAFE.